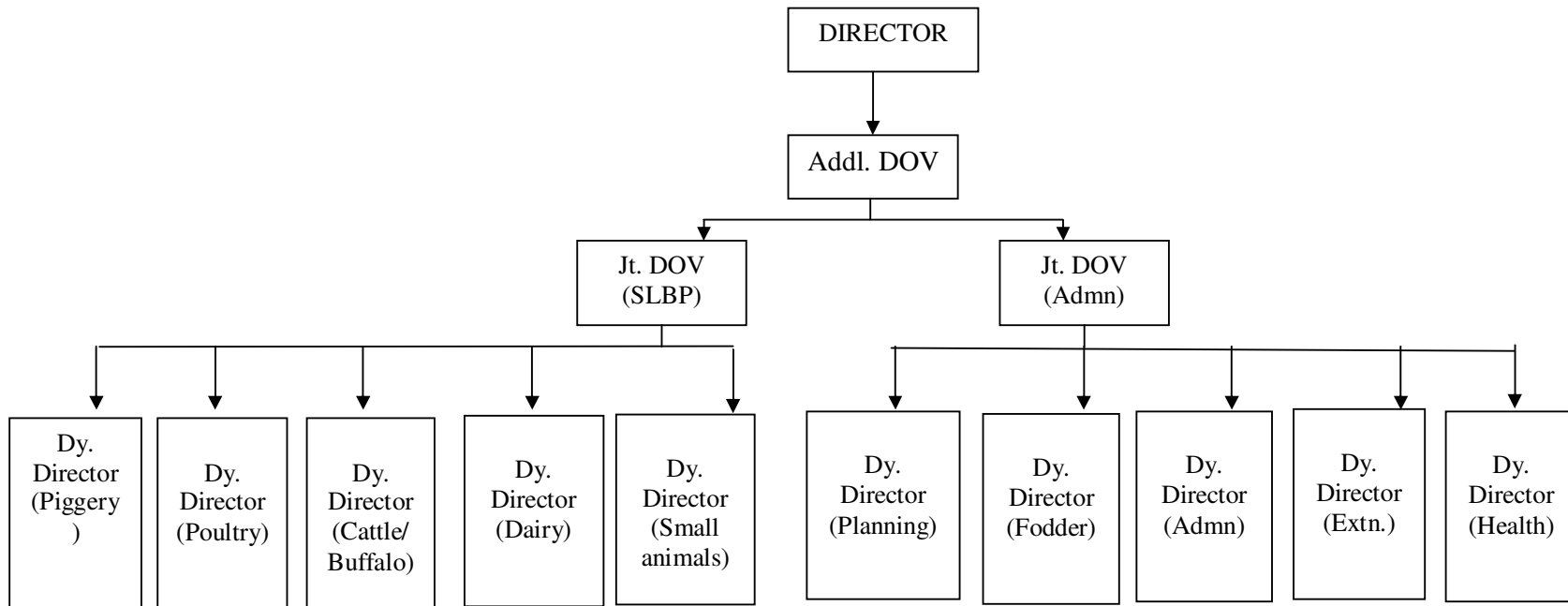


**10. Organizational Structures:**

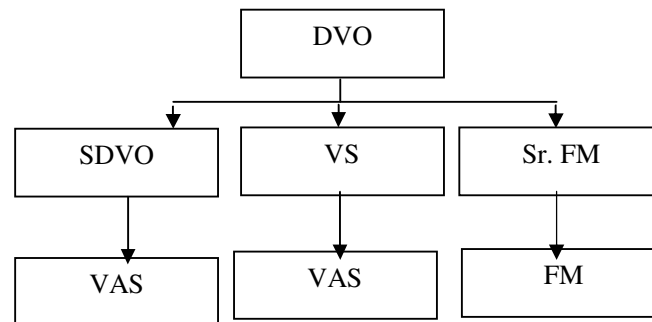
**Veterinary & A.H.**

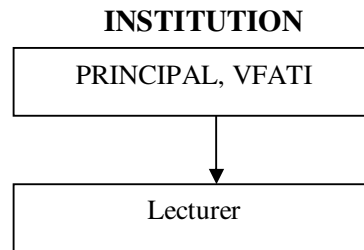
<b>Veterinary Health Services</b>	<b>Livestock &amp; Poultry and Dairy Development</b>	<b>Others</b>
Hospitals	Cattle Farms	Nagaland State Dairy Coop (KOMUL)
Dispensaries	Piggery Farms	Nagaland State Veterinary Council
Veterinary Outposts	Poultry Farms	
Disease Investigation Unit	Duck Farms	
Quarantine Check Posts	Turkey Farm	
Disease Diagnostic lab.	Goat Farm	
ELISA lab.	Sheep Farm	
FMD lab.	Rabbit Farm	
Statistic & Investigation	Pony and Yak Farm	
	Feed and Fodder Lab & Farms	
	Stockman Centres	
	ICDP	
	Mithun Research	
	Milk Chilling Plants.	
	Pasteurization Plants	
	Vety & A.H. Extension & Education	

## DIRECTORATE LEVEL



## DISTRICT LEVEL





**11. Office timing:** 9:30 A.M to 4:30 P.M. (Summer)  
9:00 A.M to 4:00 P.M. (Winter)

**12. Restriction to visitors on specified dates:** Wednesday